

**Shaw
& Co**
ESTATE
AGENTS

£330,000

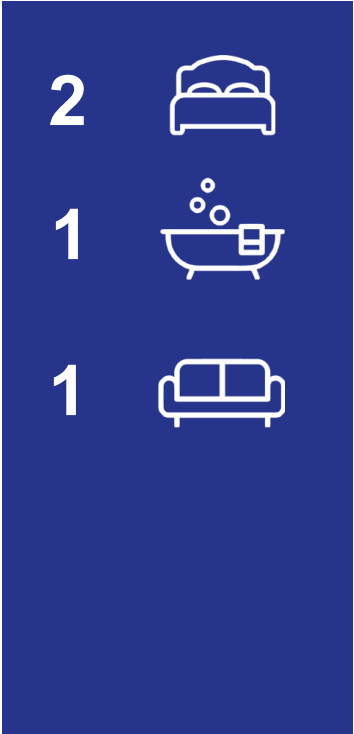
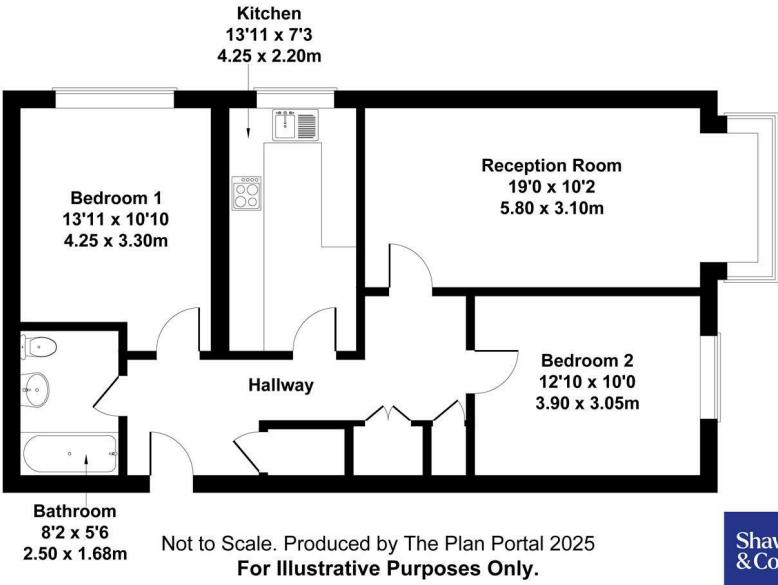
Apsley House, Staines Road

Hounslow, TW4 5BF

**Shaw
& Co**

Apsley House

Approximate Gross Internal Area
829 sq ft - 77 sq m



Energy Efficiency Rating		
	Current	Potential
Very energy efficient - lower running costs		
(92 plus) A		
(81-91) B		
(69-80) C		
(55-68) D		
(39-54) E		
(21-38) F		
(1-20) G		
Not energy efficient - higher running costs		
England & Wales	71	77
EU Directive 2002/91/EC		

Agents Note: Whilst every care has been taken to prepare these particulars, they are for guidance purposes only. All measurements are approximate and are for general guidance purposes only and whilst every care has been taken to ensure their accuracy, they should not be relied upon and potential buyers/tenants are advised to recheck the measurements

**Shaw
& Co**
ESTATE
AGENTS

OFFICE ADDRESS
Whitton
Twickenham
TW2 7LT

OFFICE DETAILS
0208 894 3646
whitton@shawandcoestates.com